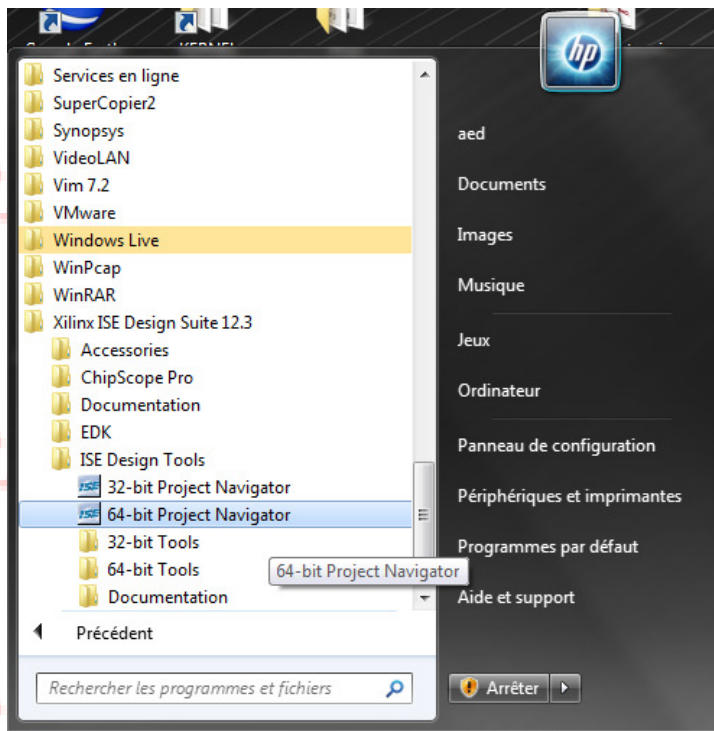


XILINX ISE - PART 1

Open a project

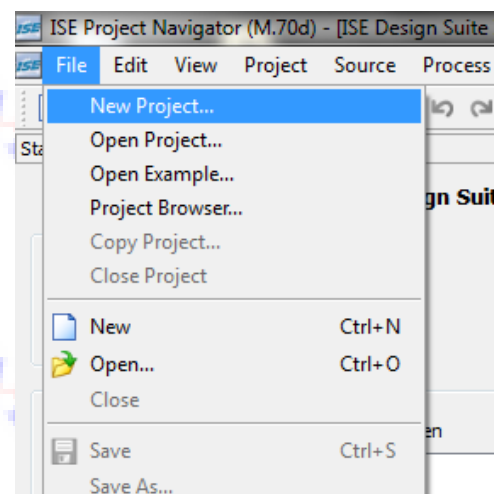


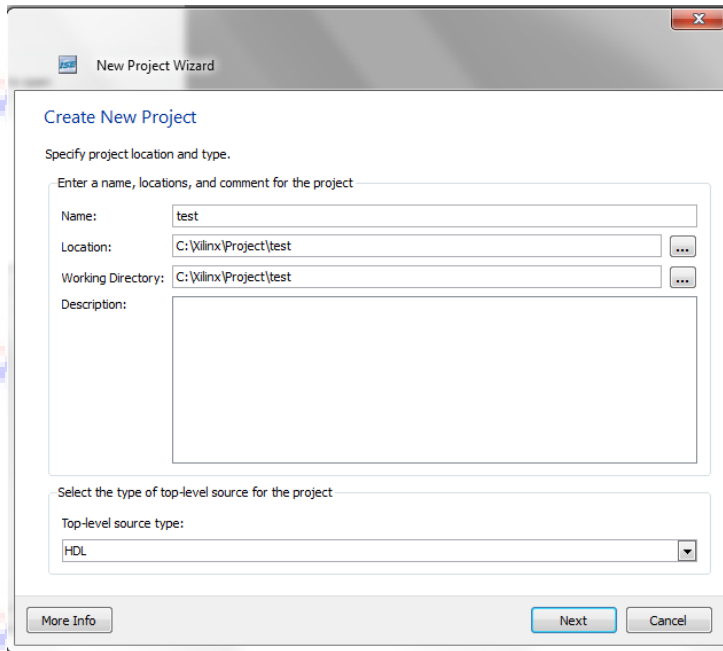
Open the Xilinx tool

Xilinx ISE 64 bits project navigator

Create a new project

Select : File -> New Project





Create a new project

Choose your project name here "test"

Choose your project directory
C:\Xilinx\Project

Choose a project directory with full rights (read and write)

Avoid path on USB key (dangerous...)

Choose HDL as op-level source type.

Click on "Next"

Create a new project

Select the FPGA which is on your board.

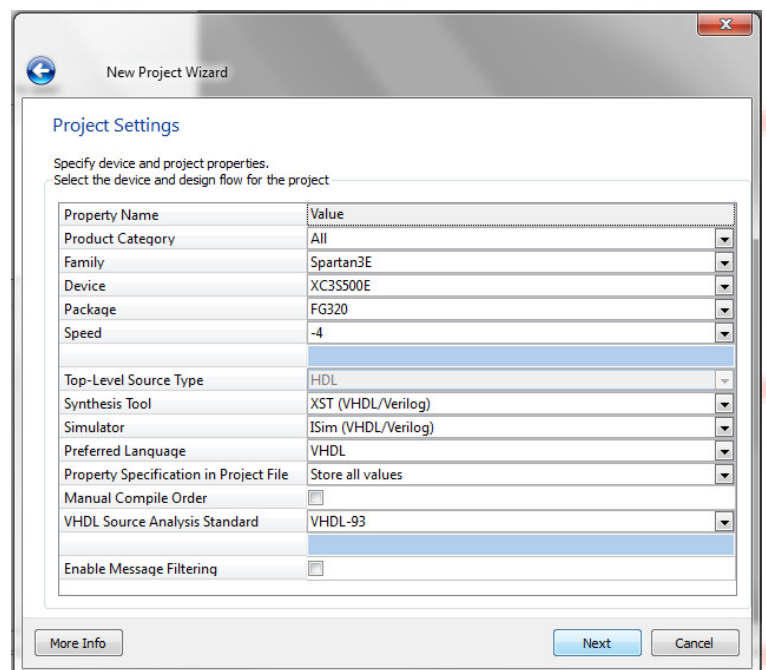
You will find the **FPGA reference** and package in the **board documentation**.

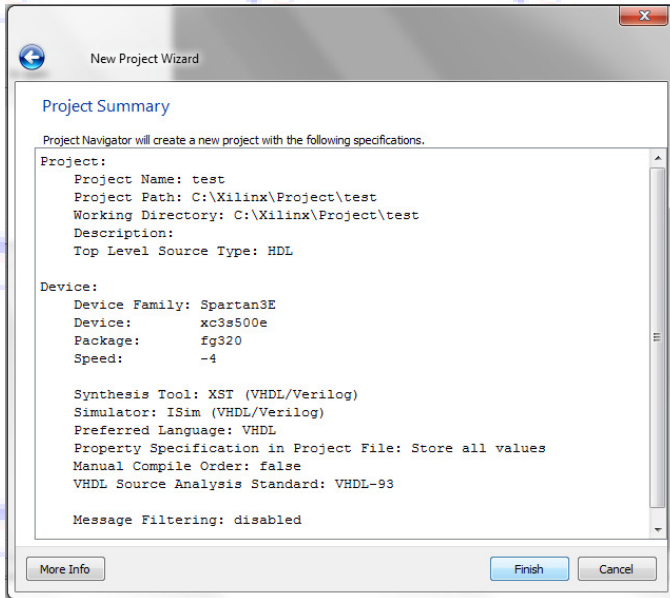
Choose XST as Synthesis tool.

Choose ISim as simulator.

Choose VHDL as preferred language

Click on "Next"





Create a new project

A Project Summary Window shows your project specification.

Click on “Finish”